

## **Display repair manual for HP2551 / HP1000SE PRO**

The repair manual was created to my best knowledge.  
I assume no liability for damage caused by the repair.  
If you do not dare to repair, please contact the  
manufacturer. You are fully responsible for your actions!

If your display from you HP2551 / HP1000SE PRO station  
is broken, please contact ecowitt ([support@ecowitt.com](mailto:support@ecowitt.com))  
and ask for a spare display. Ecowitt send you a link,  
where you can order the spare display.  
In my case it took 18 days until the display arrives.

My subjective impression is that the replacement display  
has a lower resolution than the original display but I can  
not compare – but it is fine with me. Even at the lowest  
brightness level, the display is very bright - almost too  
bright (see last page).

Good luck with the repair.

Marcel

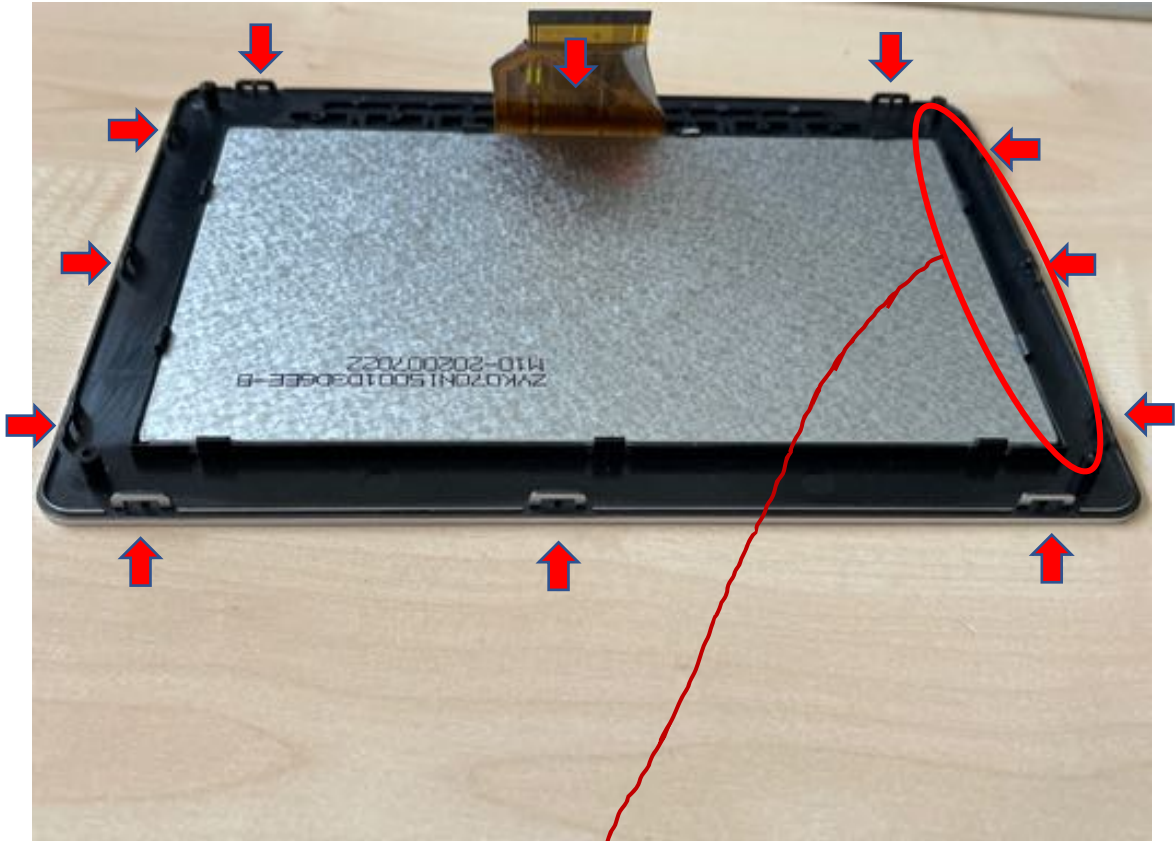
broken display



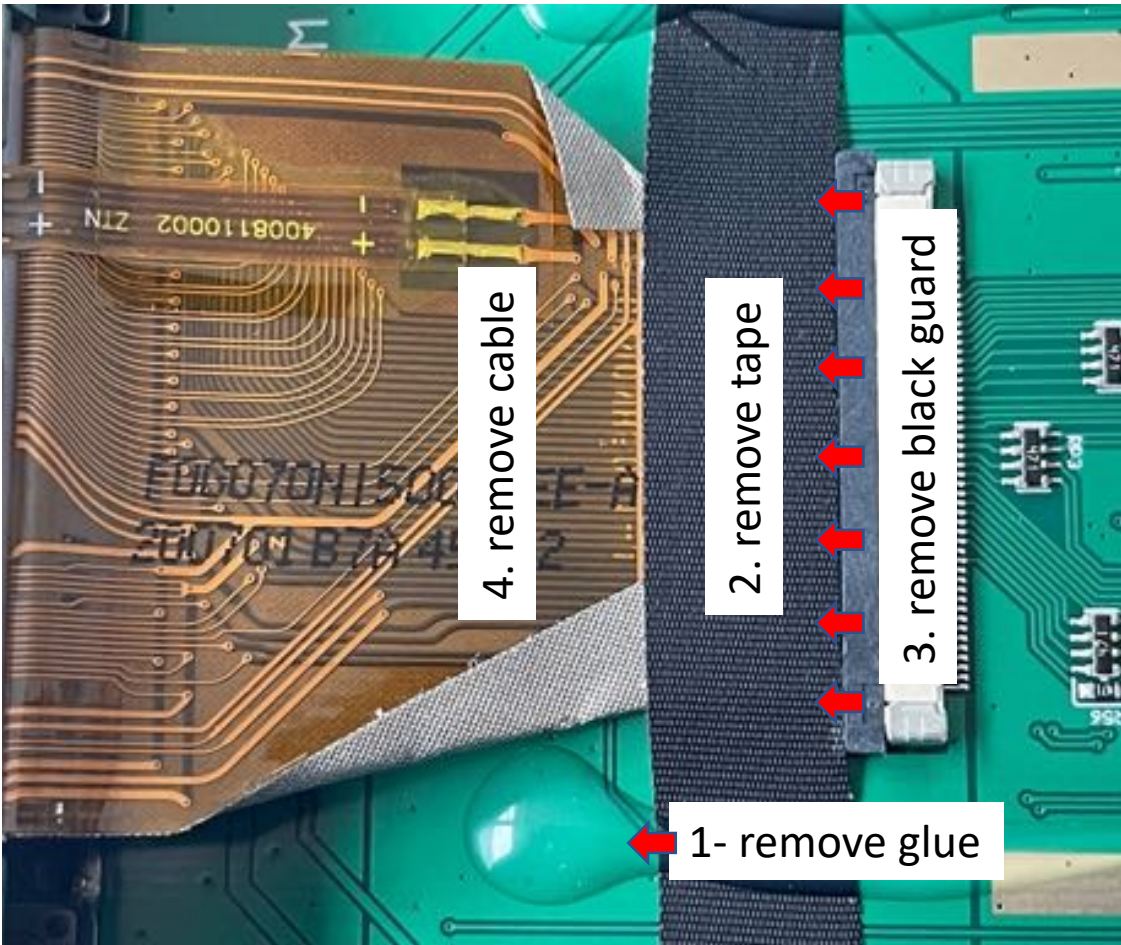
screw out 4 screws, disconnect power supply

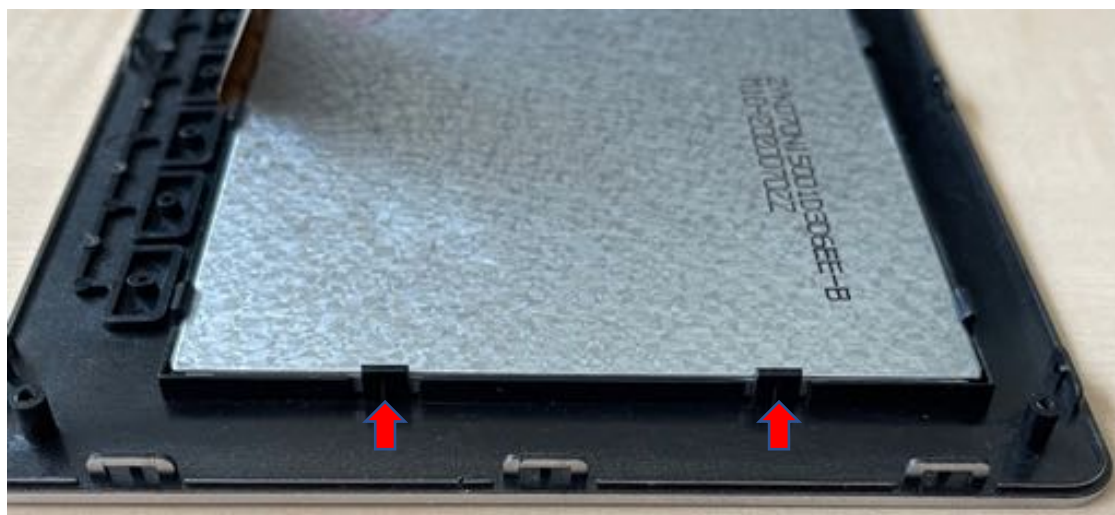


open the cover carefully



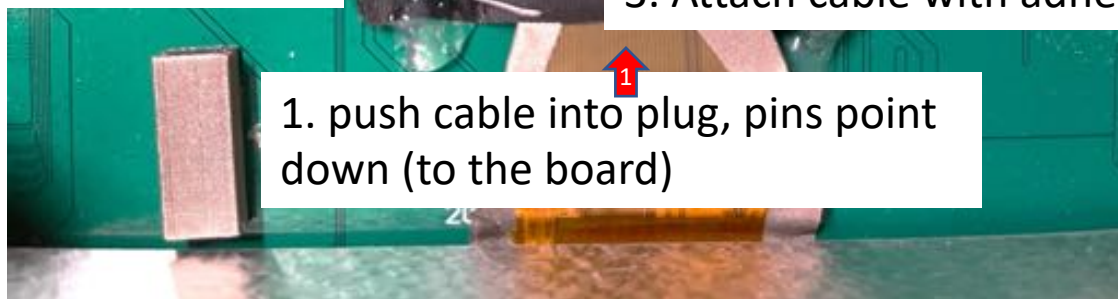
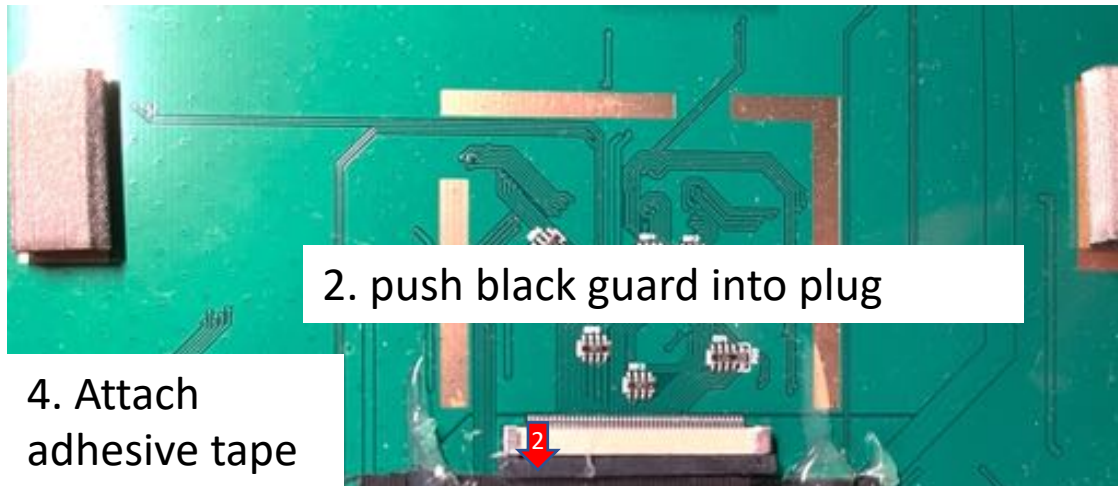
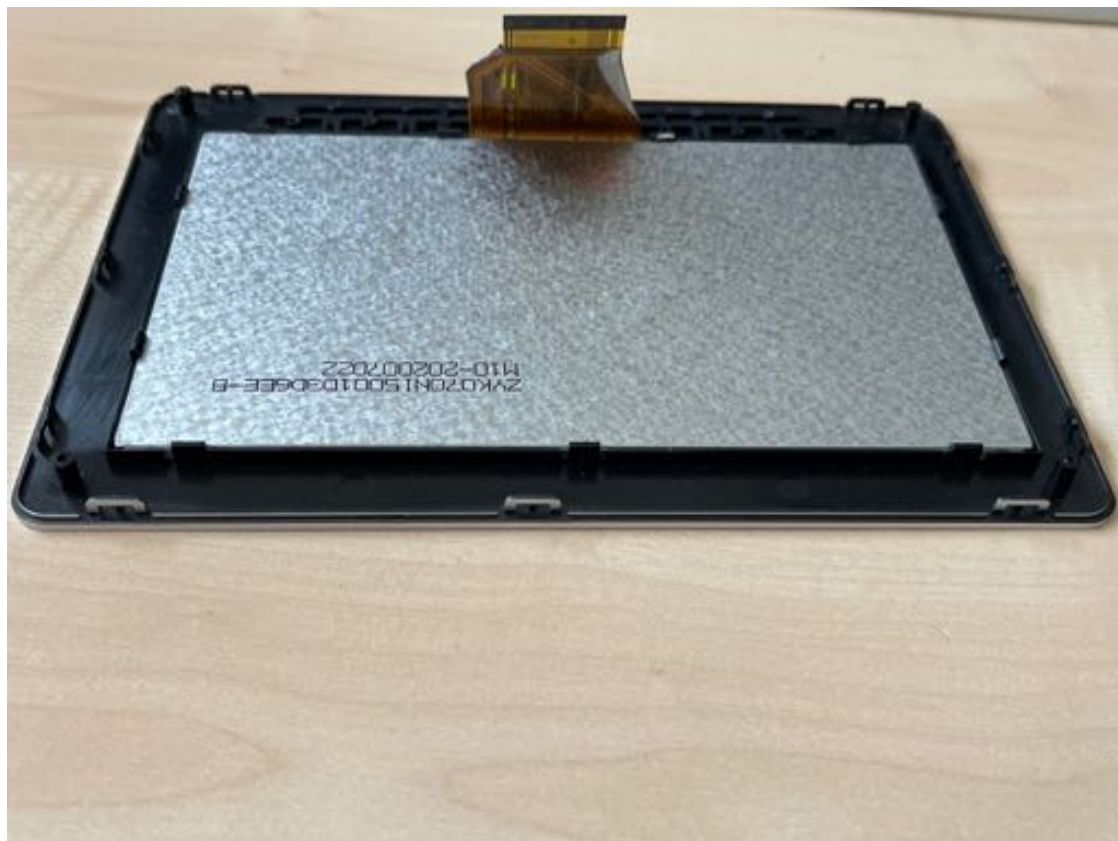




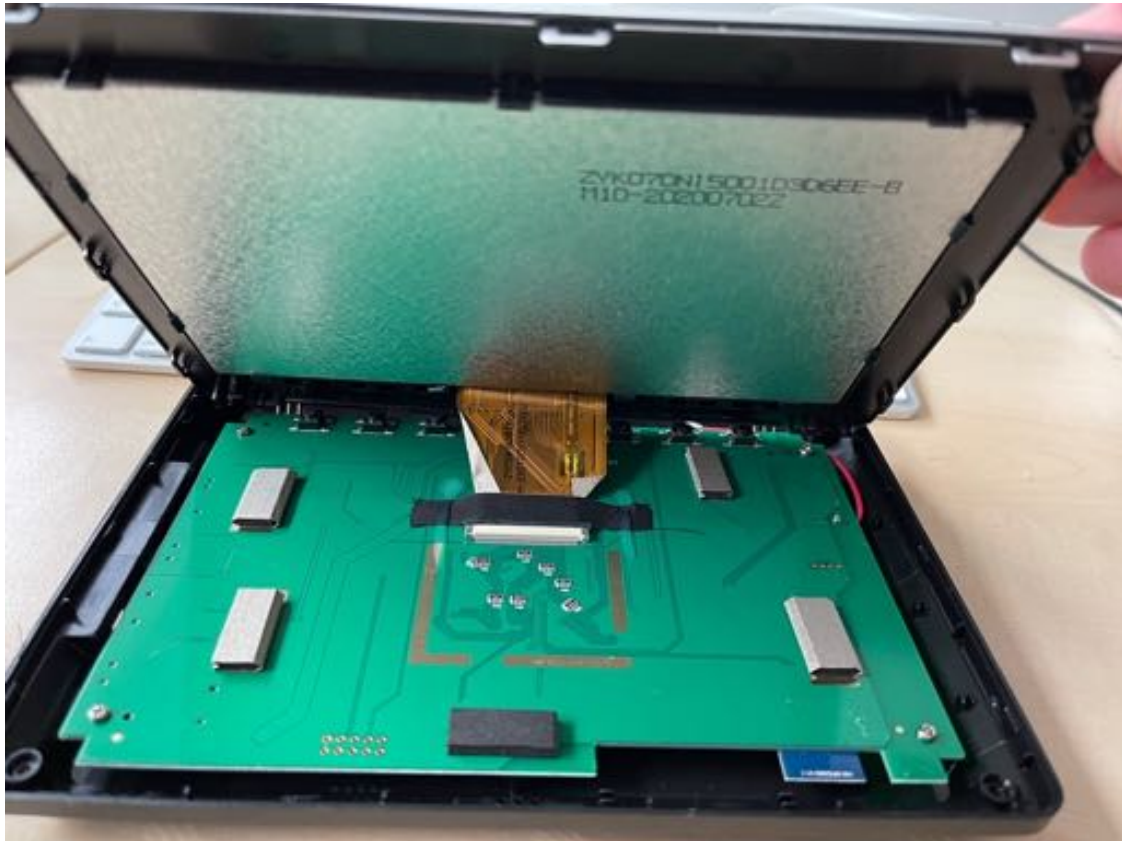




Clip the display into the frame



Clip/push display frame into base body



tighten 4 screws



Plug in the power supply

